



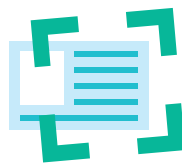
# Newly-launched BOCI-Pru **Easy-Choice** eForm MPF Mobile App

Through the newly-launched “**BOCI-Pru Easy-Choice eForm**” MPF Mobile App<sup>^</sup>, customers can submit their MPF account applications simply and efficiently anytime, anywhere.

## Introduction



**Applicable to tablet / smartphone**



**Optical Character Recognition (OCR) Function**

OCR function will automatically input the relevant information to the eForm by using camera mode to scan the ID card and residential address proof



**Electronic Signature Function**

Paperless workflow is eco-friendly

## Workflows

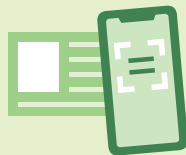


Select account type you wish to apply:

**Tax Deductible Voluntary Contributions (TVC) Account**

**Personal Account**

**Self-Employed Person (SEP) Account**



Scan **ID card** and **residential address proof**



Input other relevant information and proceed to **electronic signature**



Complete by pressing **Upload** after reviewing the information inputted to the eForm

Reference number of the relevant application will be sent to customers for record by email after completing the above workflows.



Please download “**BOCI-Pru Easy-Choice eForm**” now to enjoy paperless experience.



App Store user



Google Play user

<sup>^</sup> The mobile app service is provided by BOCI-Prudential Trustee Limited. Investment involves risks. Investors should seek independent financial and professional advice as appropriate before making any investment decision. This leaflet does not constitute any distribution, or any recommendation, offer, invitation or solicitation to buy or sell any investment. This leaflet and the Investment Manager’s website have not been reviewed by the SFC.

Leaflet Issuer and Investment Manager:  
**BOCI-Prudential Asset Management Limited**

